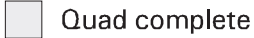
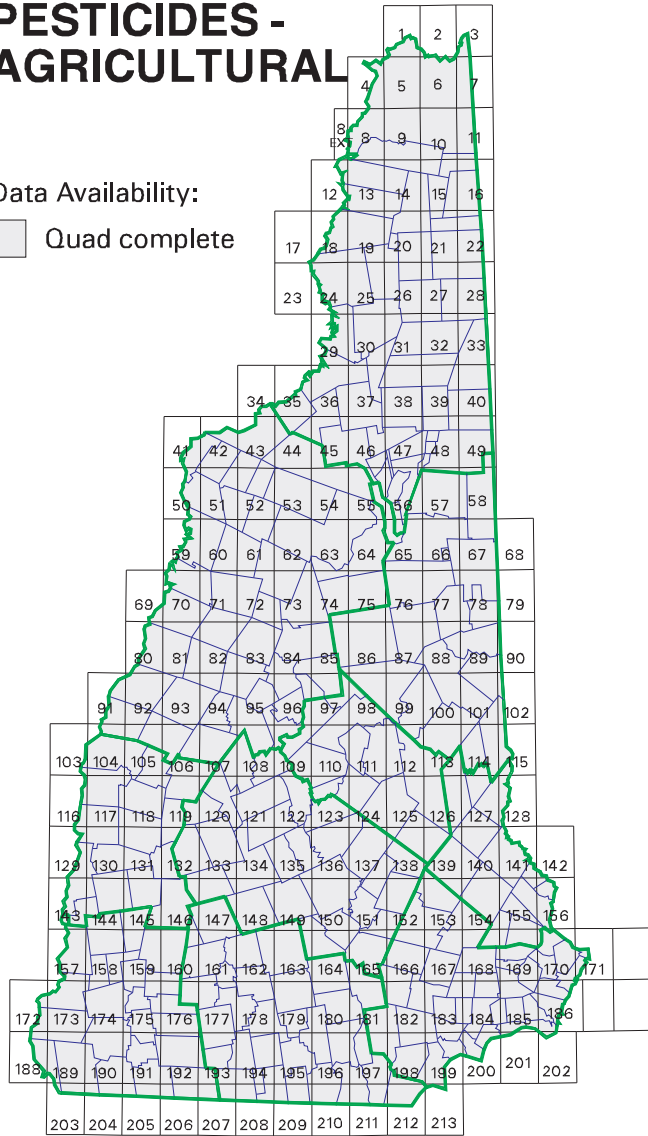


PESTICIDES - AGRICULTURAL

Data Availability:
 Quad complete



Data Layer: PESTICIDES - AGRICULTURAL

Primary Layer Name: PESThnn
 Layer Content: PESTICIDE PARCEL BOUNDARIES
 Data Structure: VECTOR
 Layer Type: POLYGON

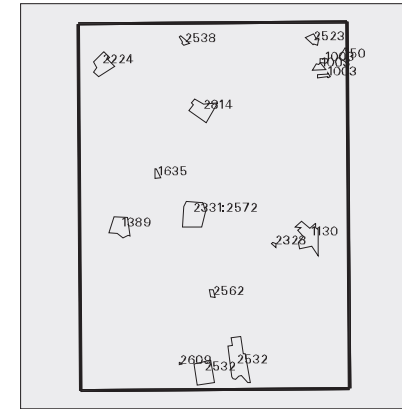
Source: NH DEPARTMENT OF AGRICULTURE
 Source Scale: 1:24,000/1:25,000
 Source Media: MYLAR

Automated By: CSRC, UNH
 Coordinate Reference: NH State Plane Feet
 Horizontal Datum: 1983
 Tile: 7.5-MINUTE QUADRANGLE

Status: COMPLETE
 Last Revision: December, 1998
 Available From: Complex Systems Research Center,
 UNH

Associated Data Files: USAGE, PESTICIDES, PESTICIDETYPE,
 LOCATION, CROPS

EPPING QUADRANGLE PESTICIDES



GENERAL DESCRIPTION

The New Hampshire Department of Agriculture maintained a historical body of pesticide usage data for the period of 1965 to 1997. The data represents applications from private and commercial-not-for-hire applicators. In 1988, the Department initiated a program to locate and map the pesticide application sites on orthophotoquad overlays. The mapped data was subsequently automated and integrated into GRANIT.

The features automated represent full parcel boundaries corresponding to addresses listed on pesticide applications, rather than the precise areas within parcels to which pesticides have been applied. The polygons are coded by applicator number, and linked to a series of attribute tables containing application-specific detail on the year of the application, type of pesticide, amount of each application, etc.

The spatial information, consisting of in excess of 1100 parcels, was last updated in February, 1994 to reflect pesticide parcels as of 1992. The attribute tables were last revised in December, 1998, and presently contain data collected through the summer of 1997.